



WP3: Spatial analysis of socioeconomic-environmental interactions

Harri Tolvanen, WP3 leader, University of Turku / Tallinn Nov. 16th 2017



European Union
European Regional
Development Fund



PLAN4BLUE

MARITIME SPATIAL PLANNING FOR
SUSTAINABLE BLUE ECONOMIES





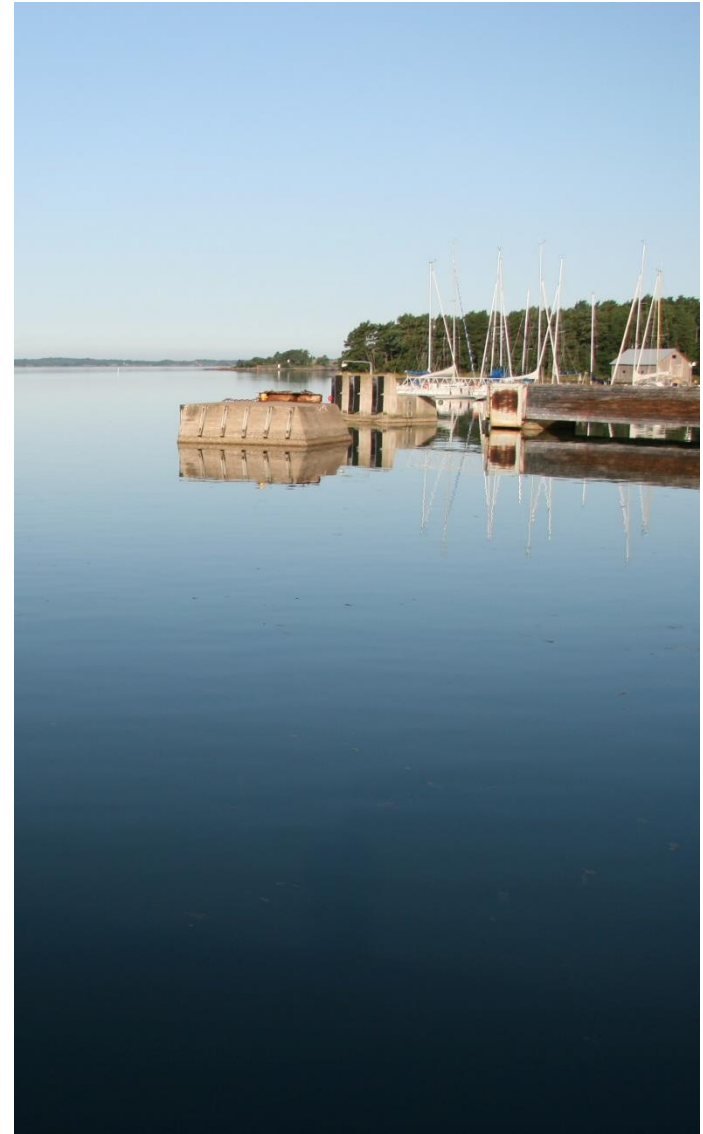
Aims of WP3 (2.1.2017-30.6.2019)

- **Thematic line 1:** Producing guidelines for spatial data utilisation in the official MSP process
- **Thematic line 2:** Spatial analysis, map production and support of other WPs in spatial issues



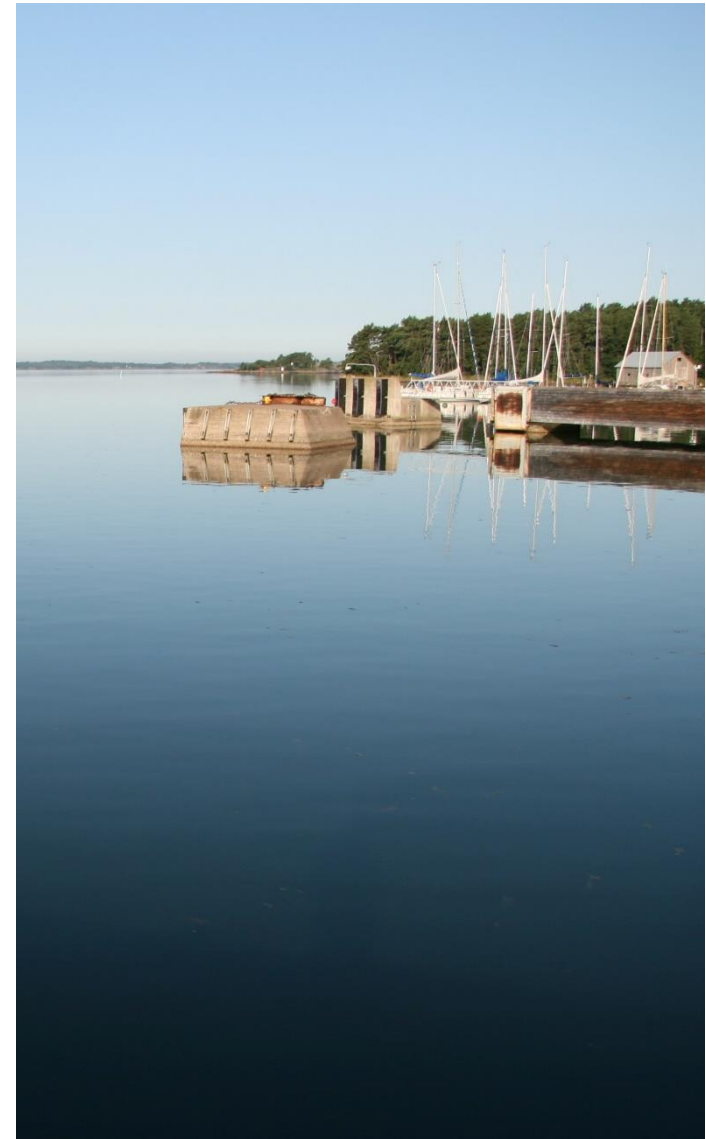
Methods of thematic line 2

- Collecting contemporary spatial data over the Gulf of Finland (HELCOM, Estonian Environmental Agency, Finnish Land Survey, Orbis database)



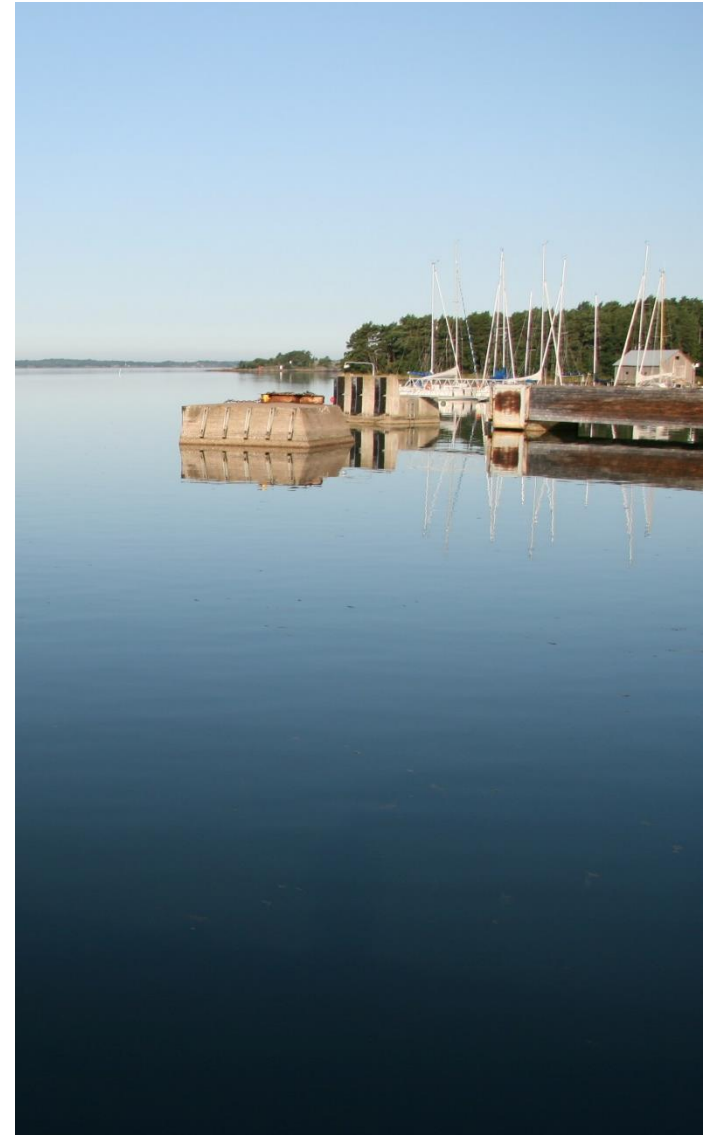
Methods of thematic line 2

- Collecting contemporary spatial data over the Gulf of Finland (HELCOM, Estonian Environmental Agency, Finnish Land Survey, Orbis database)
- Setting the stage: drafting spatial patterns of experts' (Estonian and Finnish stakeholders) future expectations as maps



Methods of thematic line 2

- Collecting contemporary spatial data over the Gulf of Finland (HELCOM, Estonian Environmental Agency, Finnish Land Survey, Orbis database)
- Setting the stage: drafting spatial patterns of experts' (Estonian and Finnish stakeholders) future expectations as maps
- Visualizing first versions of Blue Growth scenarios as heatmaps: point density (Kernel density) of four sectors



Data sources

- From **spatial data** perspective, a few preconditions are set:
 - Up-to-date information
 - Geographical coverage for the whole area
 - Uniform level of detail for the whole area
 - Uniform content (data types, languages etc.)
 - No restrictions for public use
- **Expert opinions** as basis for future scenarios
 - Development trends (non-spatial)
 - Locations (spatial!) of
 - **Increasing** activities
 - **Decreasing** or prohibited activities
 - Collected on-line and in workshops



Examples of spatial data sources

Table 1. Primary data providers (in alphabetical order) utilised for Plan4Blue background maps (see D.T3.5.1)

Provider	Coverage	Database	Web cite
IMO - International Maritime Organization	International	GISIS - Global Integrated Shipping Information System	https://gisis.imo.org/Public/Default.aspx
HELCOM - Baltic Marine Environment Protection Commission - Helsinki Commission	International	Baltic Sea data and map service	http://maps.helcom.fi/website/mapservice/index.html
EMODnet - The European Marine Observation and Data Network	International	EMODnet Data Portals	http://www.emodnet.eu/portals
Bureau van Dijk	International	Orbis	https://www.bvdinfo.com/en-gb/our-products/company-information/international-products/orbis
Estonian Land Board	Estonia	Estonian Geoportaal	http://inspire.maaamet.ee/home
Estonian Maritime Administration	Estonia	Estonian Geoportaal	http://inspire.maaamet.ee/home
Estonian Environment Agency	Estonia	Estonian Geoportaal	http://inspire.maaamet.ee/home
Statistics Estonia	Estonia	Statistical database	http://www.stat.ee/database
Estonian Environment Agency	Estonia	EELIS - Estonian Nature Information System - Estonian Environmental Register	http://loodus.keskkonnainfo.ee/eelis/default.aspx?state=1;-164545161;est;eelisand;;&lang=eng
Finnish Transport Agency	Finland	View & Download service of the Finnish Transport Agency	https://extranet.liikennevirasto.fi/extranet/web/public/latauspalvelu#
National Land Survey of Finland	Finland	NLS File service of open data	https://tiedostopalvelu.maanmittauslaitos.fi/tp/kartta?lang=en
Statistics Finland	Finland	Statistics Finland, open data and interfaces	http://tilastokeskus.fi/tup/tilastotietokannat/index_en.html

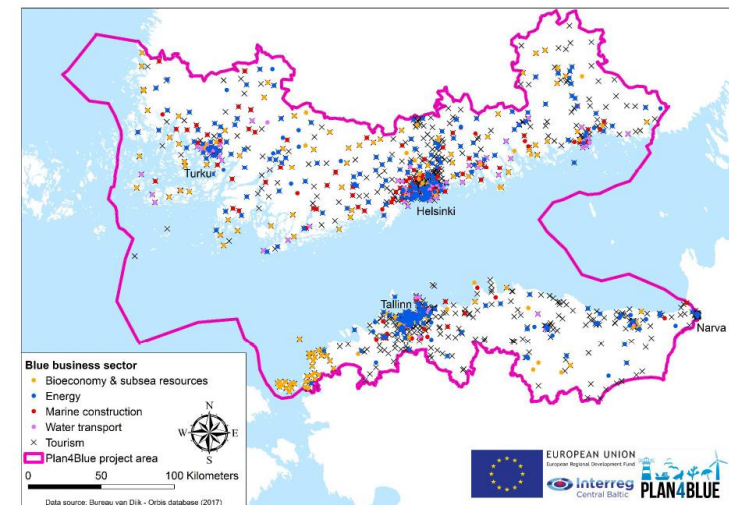
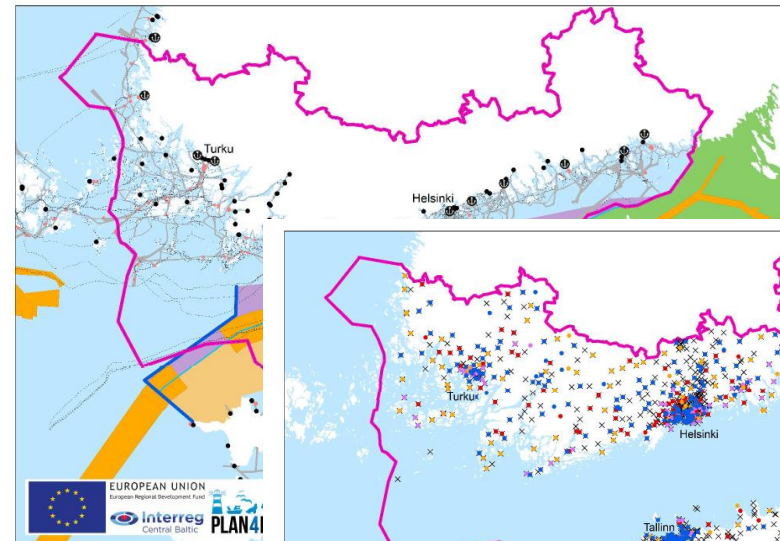
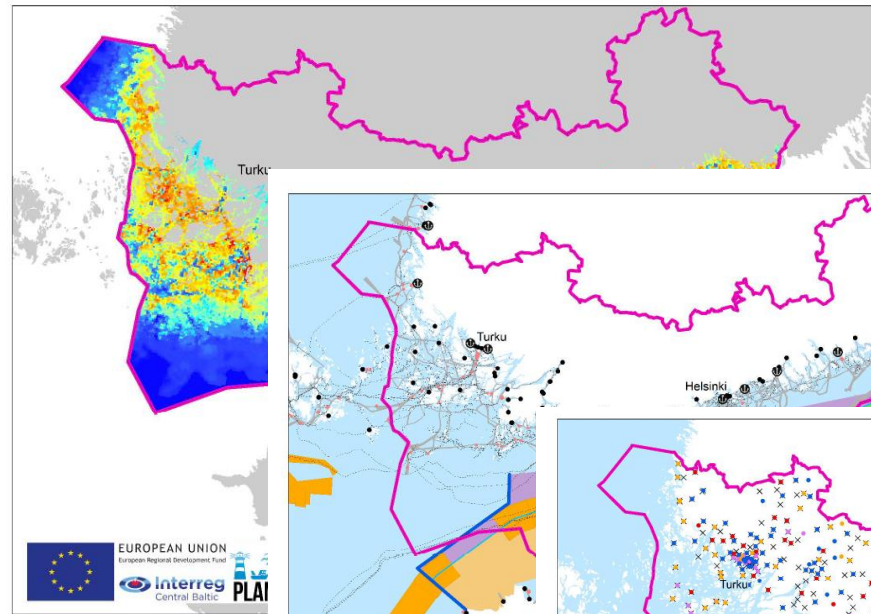
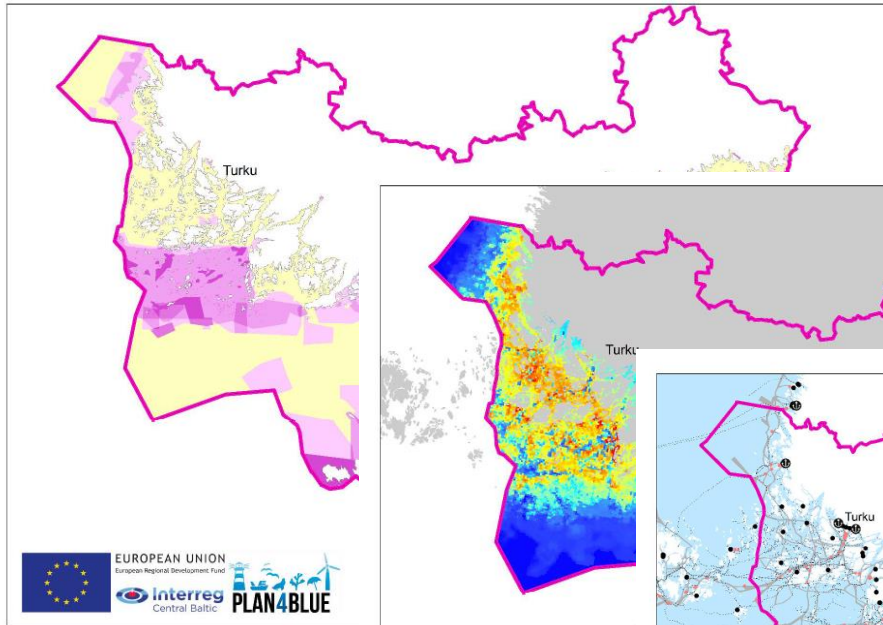
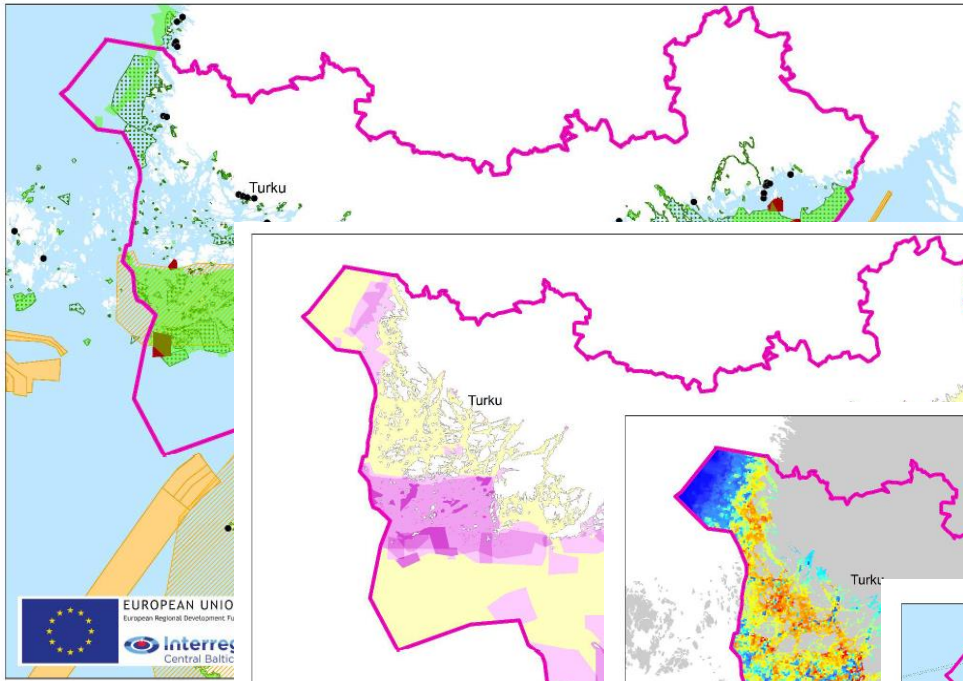


Results and outputs

- Results of **thematic line 1**: Guideline documents about
 - MSP relevant cross-border data inventory
 - Data management
 - Spatial analysis
 - Map visualisation in MSP
- Results of **thematic line 2**: Spatial analyses and maps
 - Existing MSP spatial data into background information maps



Contemporary Gulf of Finland maps



Results and outputs

- Results of **thematic line 1**: Guideline documents about
 - MSP relevant cross-border data inventory
 - Data management
 - Spatial analysis
 - Map visualisation in MSP
- Results of **thematic line 2**: Spatial analyses and maps
 - Existing MSP spatial data into background information maps
 - Interpretation of expert opinion input into map format



Results and outputs

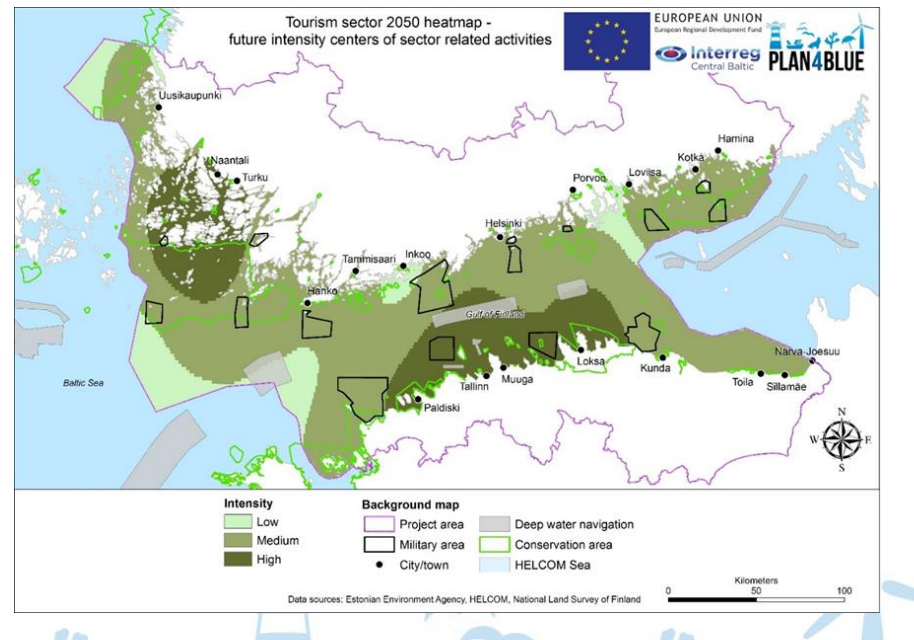
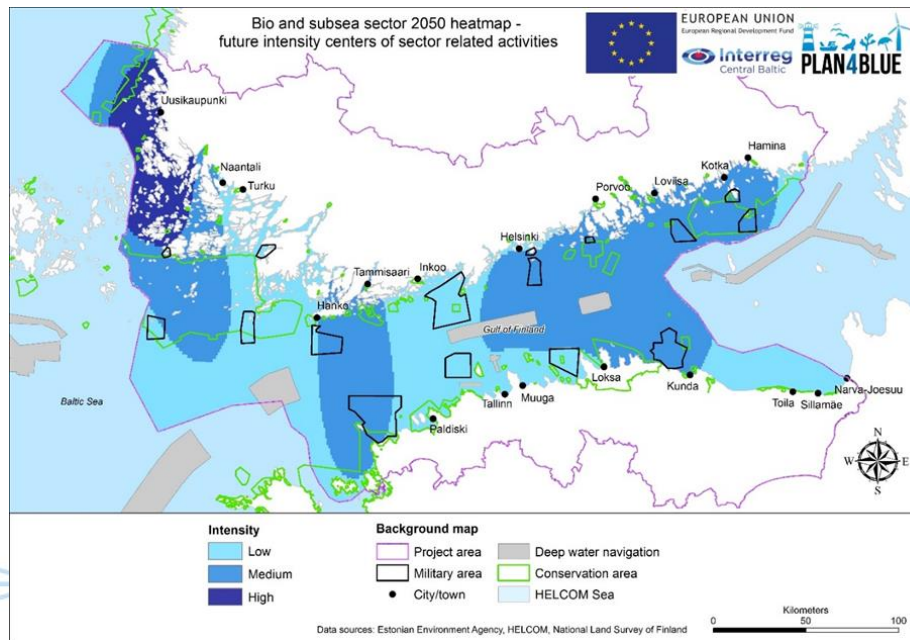
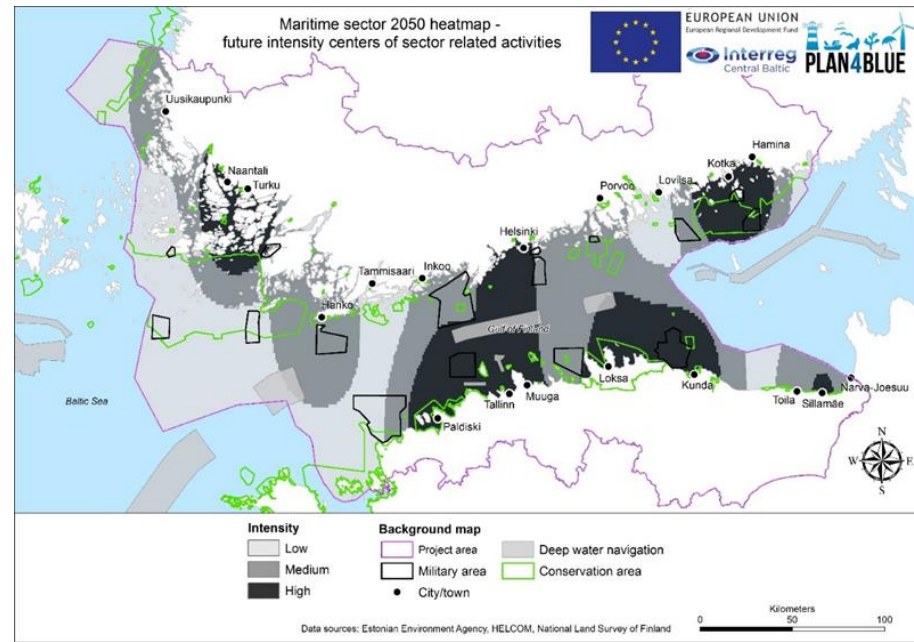
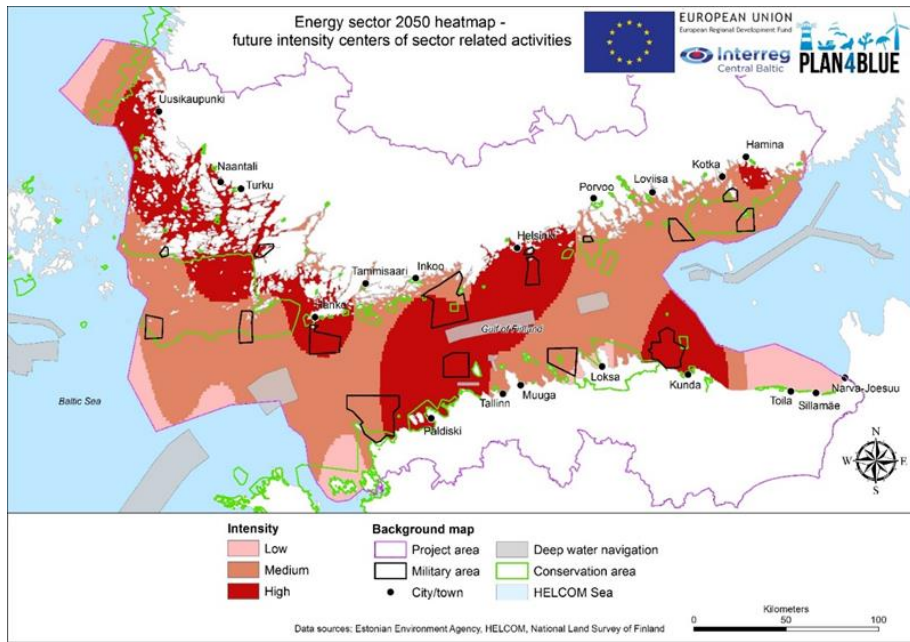
- Results of **thematic line 1**: Guideline documents about
 - MSP relevant cross-border data inventory
 - Data management
 - Spatial analysis
 - Map visualisation in MSP
- Results of **thematic line 2**: Spatial analyses and maps
 - Existing MSP spatial data into background information maps
 - Interpretation of expert opinion input into map format
 - Filtering expert input data into sector-wise maps



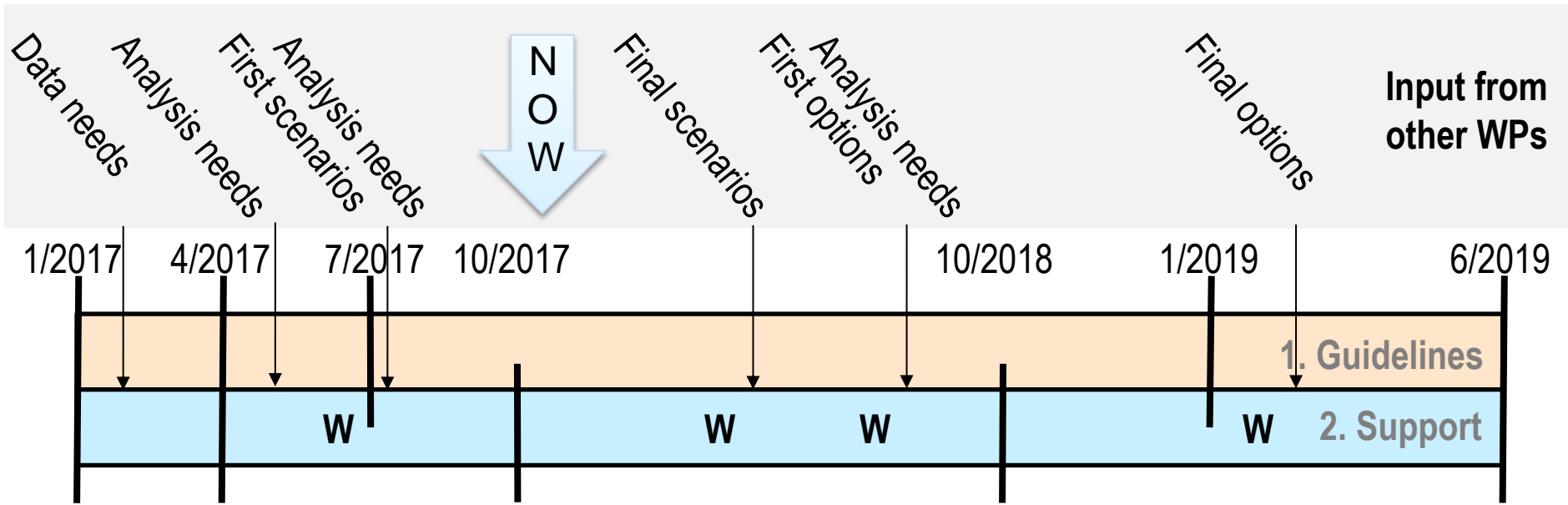
Results and outputs

- Results of **thematic line 1**: Guideline documents about
 - MSP relevant cross-border data inventory
 - Data management
 - Spatial analysis
 - Map visualisation in MSP
- Results of **thematic line 2**: Spatial analyses and maps
 - Existing MSP spatial data into background information maps
 - Interpretation of expert opinion input into map format
 - Filtering expert input data into sector-wise maps
 - Producing sector-wise intensity maps of the expert opinions





Timeline



**Gof data inventory
Gulf of Finland maps
Guidelines: data inventory**

Guidelines: data management

Gof first scenario maps

Gof first option maps

Guidelines: analysis

**Final Gof option maps
Guidelines: visualisation**

2 minutes for questions



Partners



UNIVERSITY OF TARTU



Turun yliopisto
University of Turku



Helsinki-Uusimaa
Regional Council



VARSINAIS-SUOMEN LIITTO
EGENTLIGA FINLANDS FÖRBUND
REGIONAL COUNCIL OF SOUTHWEST FINLAND



Thank you!

MORE INFORMATION

harri.tolvanen@utu.fi

[SYKE.FI/PROJECTS/PLAN4BLUE](https://www.syke.fi/projects/plan4blue)

[#plan4blue](https://twitter.com/plan4blue)



European Union

European Regional
Development Fund



KESK-EUROOPAN
INVESTOINTIFUNDIN
KESKUS



PLAN4BLUE

MARITIME SPATIAL PLANNING FOR
SUSTAINABLE BLUE ECONOMIES

